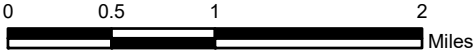


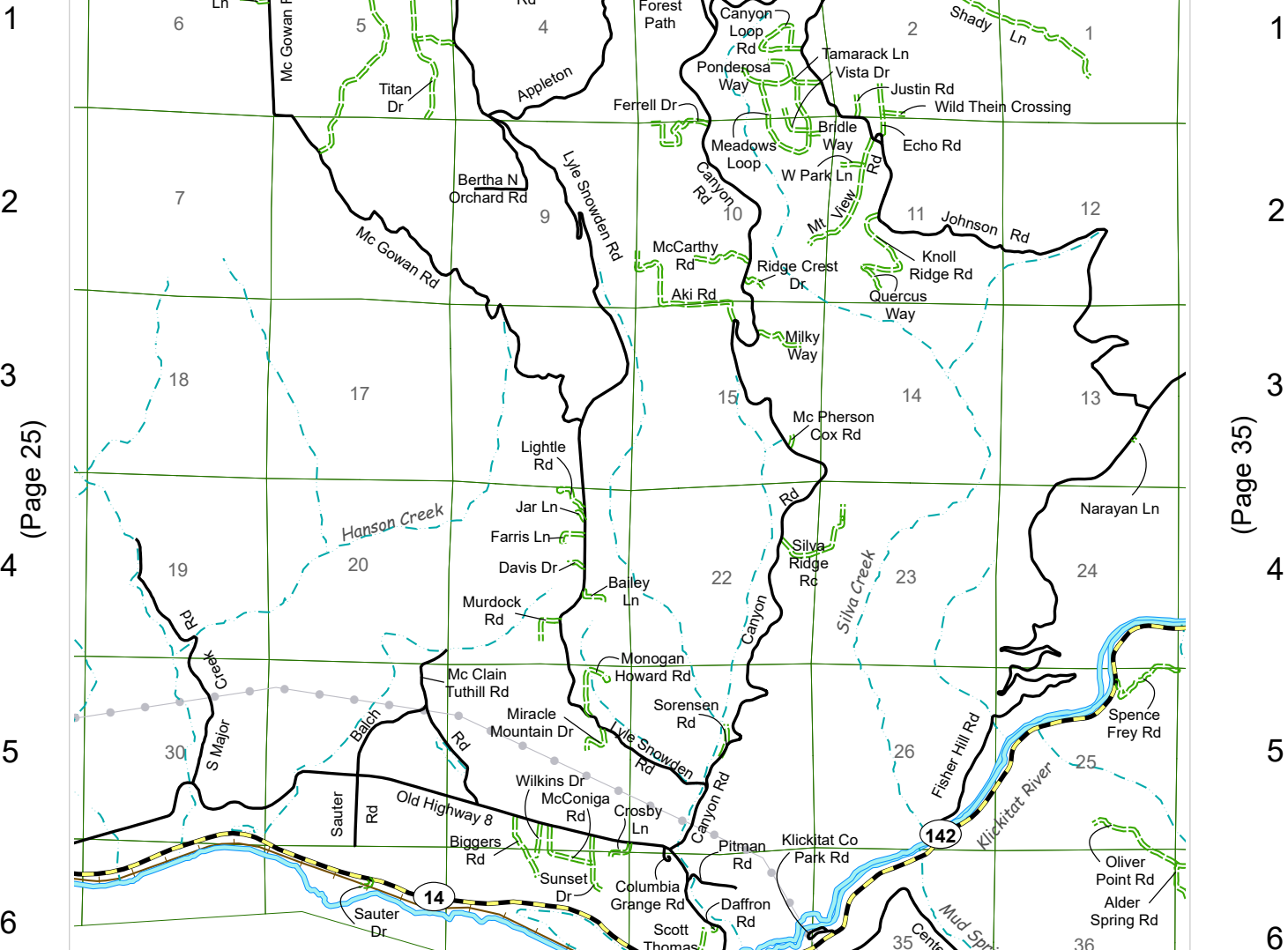
TOWNSHIP 3 NORTH, RANGE 12 EAST



- | | | | |
|--|-------------------|--|-----------------|
| | STATE | | CREEK |
| | COUNTY | | RIVER |
| | CITY | | RAILROAD |
| | PRIVATE | | BPA LINE |
| | OTHER GOVT | | |



A B C (Page 31) D E F



Page 25)

Page 35)

A B C D E F

(Page 29)