

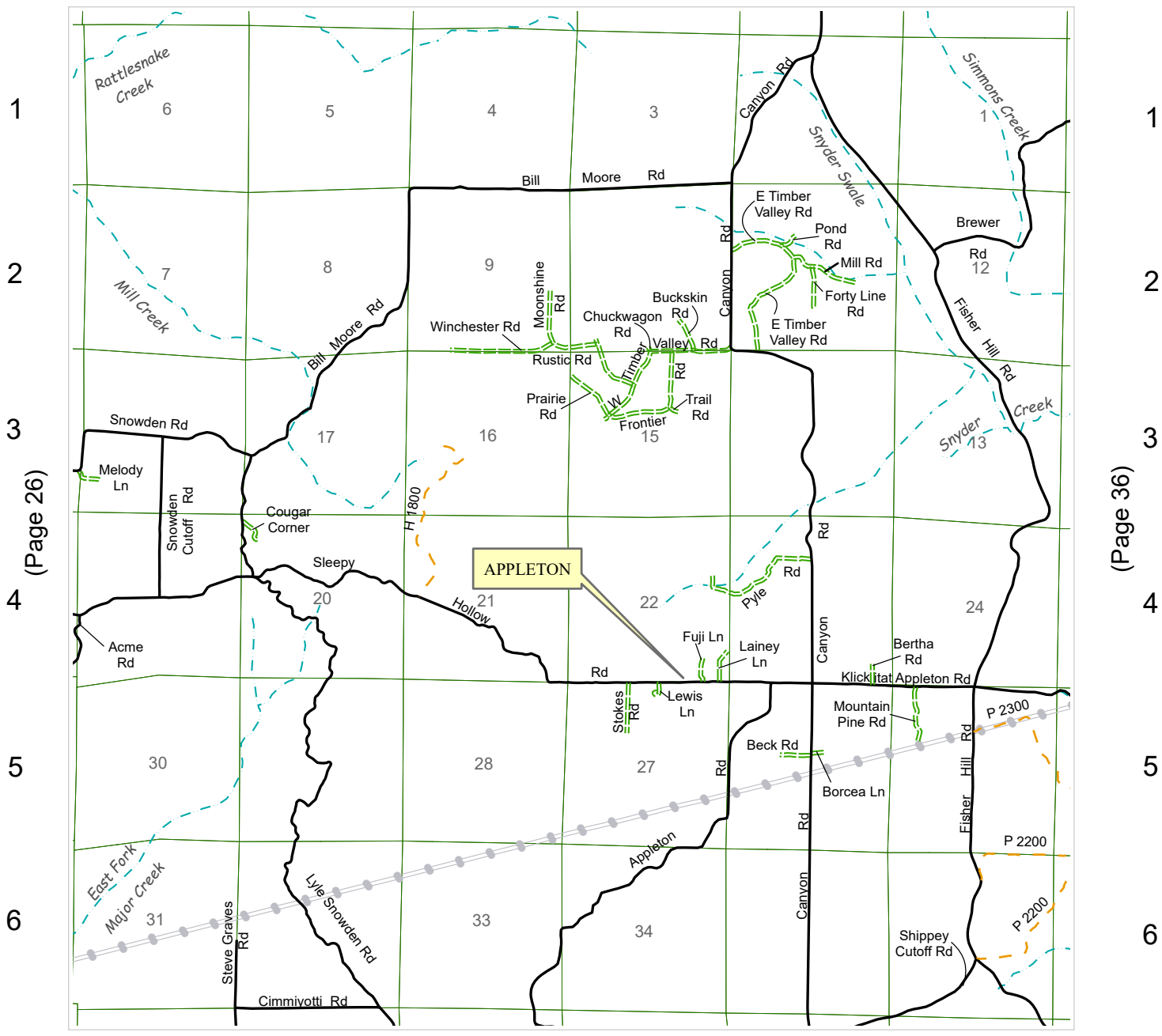
TOWNSHIP 4 NORTH, RANGE 12 EAST



- | | | | |
|--|------------|--|----------|
| | STATE | | CREEK |
| | COUNTY | | RIVER |
| | CITY | | RAILROAD |
| | PRIVATE | | BPA LINE |
| | OTHER GOVT | | |



A B C (Page 32) D E F



Page 26)

Page 36)

A B C D E F
(Page 30)