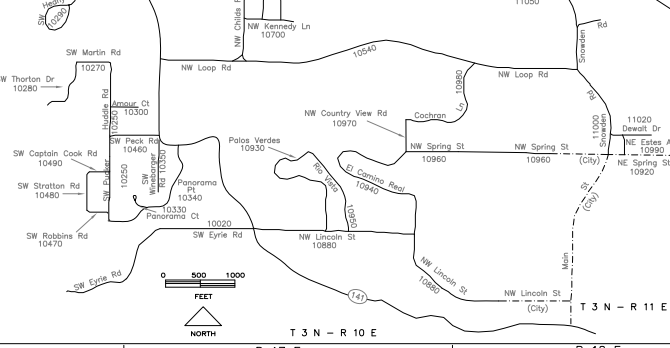
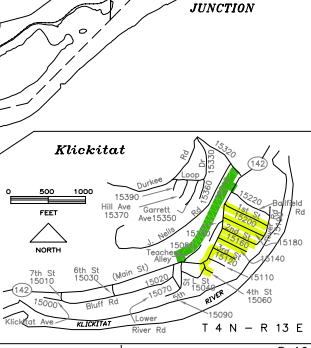
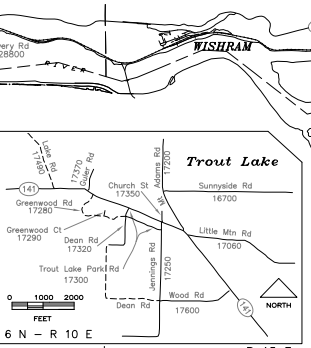
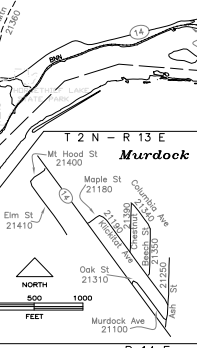
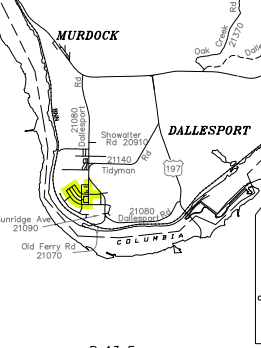
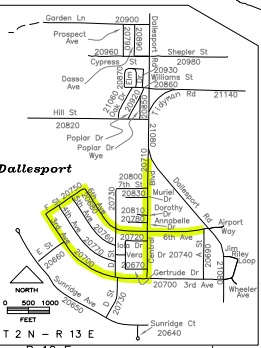
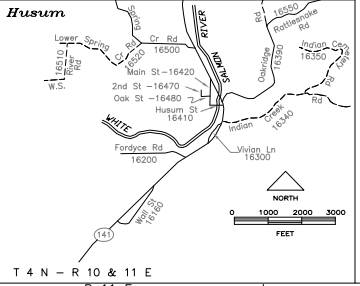
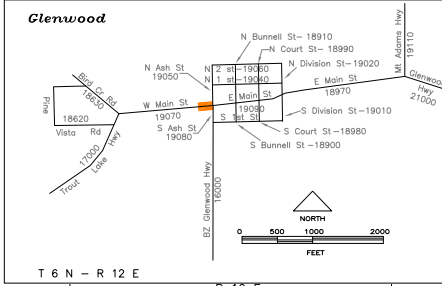
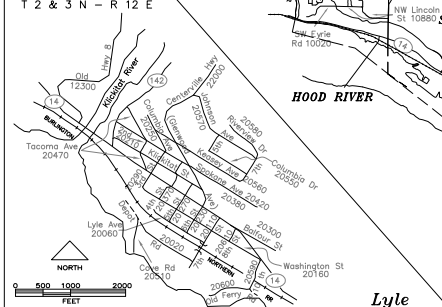
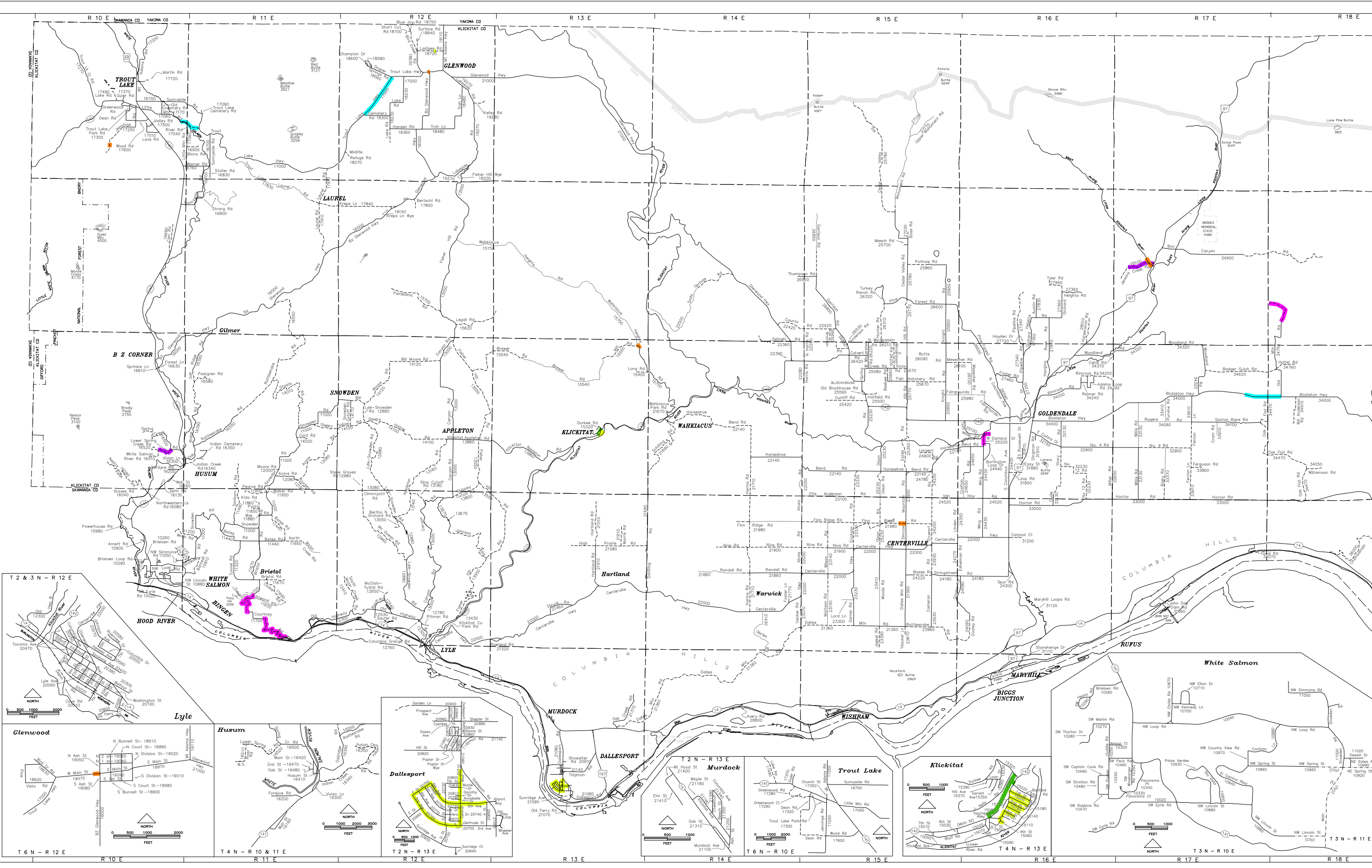
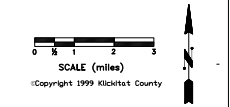


KLICKITAT COUNTY

- NATIONAL FOREST
- STATE HIGHWAY
- PAVED (07)
- PAVED (08)
- PAVED (09)
- GRAVEL (08)
- GRAVEL (09)
- PRIMITIVE (09)
- CREEK
- TRANSMISSION LINE
- GAS PIPELINE
- RAILROAD
- CITY LIMITS

- 2021
- 2022
- 2023
- 2024
- 2025
- 2026



Six Year Road Program 2021 - 2026 West End