



Boundary Line Adjustment

If you have questions, please
call the Klickitat County Planning
Department

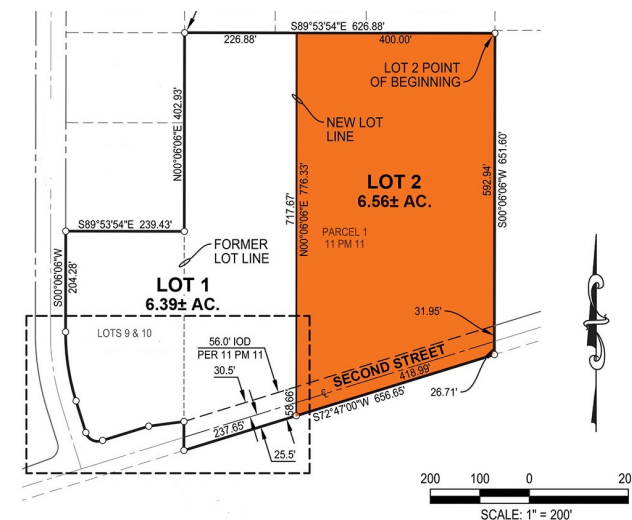
(509) 773-5703
(509)493-6084 (from White Salmon)
1-800 765-7239
Fax (509)-773-6206

or stop by the County Services Building
115 W. Court St. 3rd Floor
8:00 AM - 5:00 PM

planning2@klickitatcounty.org

Klickitat County Planning Department
115 West Court Street, MS-302
Goldendale, WA

IF YOUR PROPERTY IS LOCATED IN THE NATIONAL SCENIC AREA,
THE COLUMBIA RIVER GORGE COMMISSION REQUIRES YOU TO
COMPLY WITH ALL NATIONAL SCENIC AREA REGULATIONS. THEY
CAN BE CONTACTED AT 509 493-3323



This brochure outlines the
process for adjusting the
property line between two
parcels of land

This brochure contains general information
only and is subject to periodic change.
Contact the Planning Department for specific
details regarding current information.

What is a Boundary Line Adjustment?

A boundary line adjustment is an adjustment of an existing lot line in a recorded subdivision or short subdivision. Reasons to adjust a boundary line might include: survey correction; to provide more garden space; resolve a boundary dispute; or add an area for pets or livestock.

Boundary Line Adjustment Application Process

An application form obtained from the Planning Department must be completed by the property owner(s). Also required:

- A current title certificate from an accredited title company showing ownership and vested interest holders of the property.
- The notarized signature(s) of all vested interest holders in the property giving permission for the proposed boundary line adjustment.
- A survey of the property showing existing and proposed lot lines.
- Application fee of \$500.00, payable to the Planning Department.
- A checklist will be provided with the application listing all documents and information that is required for a complete application.

Who Reviews Boundary Line Adjustments?

The Klickitat County Health Department will review for conformance with standards for on-site sanitation disposal and potable water supply.

The Klickitat County Engineer will review for conformance with county standards for survey data, access, and easements.

The Klickitat County Planning Department will review for conformance with the Klickitat County Comprehensive Plan, Zoning Ordinance, Floodplain Ordinance, Environmental Ordinance, and any other applicable laws or policies.

Once approval has been obtained from the Health Department, the County Engineer, and the Planning Department; a meeting will be scheduled with the Klickitat County Board of Commissioners for final approval of the boundary line adjustment.

The approved boundary line adjustment must be filed with the Klickitat County Auditor.

After filing the adjustment, the owner(s) should have a deed created for the area to be transferred and file the deed with the Klickitat County Auditor.

Does This Process Apply To All Boundary Line Adjustments?

No. If a boundary line adjustment is being proposed for property that is not within an approved Subdivision or Short Plat, this process does not apply.

If your property is not within an approved Subdivision or Short Plat, contact the Planning Department for minimum requirements.

FEES:

Application Fee	\$500.00
Title Certificate	Contact Title Company
Public Works Plat Review GIS Fee	Contact Public Works
Filing Fee	Contact KC Auditor

RECORDING:

Once the final Boundary Line Adjustment has been approved and signed by the Board of County Commissioners, it must be recorded in the County Auditor's Office. A new deed may be needed to complete the conveyance of property.