



# KLICKITAT COUNTY

in cooperation with  
Republic Services &

The Washington Department of Ecology

For the year

# 2017

## 2017 Curbside Recycling Schedule Inside

---

### Scrap Metal Recycling:

Collected at BZ Corners, Dallesport, and Goldendale Transfer Stations

#### Accepted for Recycling:

---

**Aluminum:** household items, lawn chair, window frame, screen door, lawn mower, chain saw (drain all fluids on power equipment)

**Die Cast:** plumbing parts, automotive parts

**Stainless:** household items, plumbing parts, industrial items

**Steel:** piping, farm items, automotive parts, roofing, siding

**Cast:** heating stoves, window weights, automotive parts, piping

**Tin:** bicycles, B-B-Q, household items, siding, roofing, gutters

**Copper:** plumbing, household items, roofing

**Brass:** plumbing, automotive parts, farm items, household items, etc.

**Lead:** roofing, plumbing, fishing, etc.

**Wire Electrical:** (copper or aluminum) household, automotive, industrial

#### Not Accepted for Recycling

---

**No Electrical:** motors, fluorescent lamp ballasts

**No Wire/Cable:** phone wire, coax, steel cable, wire fence, baling wire

**No Oil Filled Space Heaters**

**No Vehicles requiring a license:** automobiles, campers, trailers, boats

**No Cylinders:** pneumatic, shocks, struts, propane, fire extinguisher, gas, chemical, etc.

---

## Transfer Station Services Available at No Charge – Drop Off Only

### Residential and Commercial Customers

Drop-off Commingled Recycling (includes all items on the residential curbside recycle list)

Glass (food and beverage containers only) (sorting by color not required)

Scrap Metal

### Residential Customers Only

Plastic Nursery Pots (drop off recycling only; nursery pots are not accepted in curbside collection)

Mercury Lamp Recycling: CFLs and Fluorescent tubes (some commercial accepted, check our website; not accepted curbside)

White Goods (bulky metal appliances from Klickitat County Residents only – out of county appliances not accepted)

Household generated hazardous waste and E-Waste (TVs, computers monitors, & eReaders accepted at Goldendale only)

Household Bio-hazardous Sharps Containers (for safe storage and disposal of needles and lancets)

Motor Oil (Goldendale transfer station 1<sup>st</sup> and 3<sup>rd</sup> Saturday) (used oil also accepted at NAPA Auto Parts in Bingen and Brownings Fire Extinguisher Service on Hwy 142 just west of Goldendale.)

## 2017 Klickitat County Residential Curbside Recycling

To sign up or ask questions call 509-773-5825 (toll free 866-319-4811)

Sign up on the web at [www.KlickitatCounty.org/SolidWaste](http://www.KlickitatCounty.org/SolidWaste)

COLLECTION AREA	JAN	FEB	MAR	APR	MAY	JUN	JULY	AUG	SEPT	OCT	NOV	DEC
White Salmon	9	6	6	3	1	12	10	7	4*	2	13	11
Appleton, Timber Valley	23	20	20	17	15	26	24	21	18	16	27	25*
<b>Monday</b>					29*					30		
Dallesport	10	7	7	4	2	13	11	8	*5*	3	14	12
<b>Tuesday</b>	24	21	21	18	16	27	25	22	19	17	28	*26*
<b>Tuesday</b>					*30*					31		
Puckerhuddle	11	8	8	5	3	14	12	9	*6*	4	1	13
Husum, BZ	25	22	22	19	17	28	26	23	20	18	15	*27*
<b>Wednesday</b>					*31*						29	
Centerville	12	9	9	6	4	*1*	13	10	*7*	5	2	14
High Prairie	26	23	23	20	18	15	27	24	21	19	16	*28*
<b>Thursday</b>						29					30	
Glenwood	13	10	10	7	5	*2*	14	11	*8*	6	3	1
<b>Friday</b>	27	24	24	21	19	16	28	25	22	20	17	15
<b>Friday</b>						30						*29*
Snowden	2	13	13	10	8	5	3	14	11	9	6	4
Bingen	16	27	27	24	22	19	17	28	25	23	20	18
<b>Monday</b>	30						31					
Maryhill, Wishram	3	14	14	11	9	6	4*	1	12	10	7	5
Lyle, Wahkiacus	17	28	28	25	23	20	18	15	26	24	21	19
<b>Tuesday</b>	31							29				
Goldendale	4	1	1	12	10	7	*5*	2	13	11	8	6
<b>Wednesday</b>	18	15	15	26	24	21	19	16	27	25	22	20
<b>Wednesday</b>			29					30				
Klickitat,	5	2	2	13	11	8	*6*	3	14	12	9	7
Pine Forest, Firwood,	19	16	16	27	25	22	20	17	28	26	23*	21
Blockhouse			30					31				
<b>Thursday</b>												
Bickleton, Roosevelt	6	3	3	14	12	9	*7*	4	1	13	10	8
East side & North on Hwy 97	20	17	17	28	26	23	21	18	15	27	*24*	22
Orchard Heights, Trout Lake			31						29			
<b>Friday</b>												

**\*Holiday Schedule Changes:**

The schedule above shows the normal, every other week collection days. When a Holiday from the list below occurs during a given week, the scheduled activity for that day and the remainder of that week is shifted to the following day.

**For example:** If the Holiday was on Tuesday, Monday's route would not be affected. Tuesday would be observed as a Holiday. Tuesday's route would be picked up on Wednesday. Wednesday's route would be picked up on Thursday. Thursday's route would be picked up on Friday. And Friday's route would be picked up on Saturday.

**May 29, Memorial Day      Jul 4, Independence Day      Sept 4, Labor Day**  
**Nov 23, Thanksgiving Day      Dec 25, Christmas**

Free curbside recycling is only available to residential structures.  
 Fee based commercial service is available. Call (509)773-5825.

**Transfer Station Drop-off Recycling & Household Hazardous Waste Centers:** (Closed on Holidays above)

<u>Roosevelt Landfill</u>	<u>Goldendale</u>	<u>Dallesport</u>	<u>BZ Corners</u>
800-275-5641	509-773-6202	509-767-4468	509-493-4434
7:00 am - 3:00 pm	9:00 am - 5:00 pm	9:00 am - 5:00 pm	9:00 am - 5:00 pm
Monday - Saturday	Tuesday - Saturday	Tuesday - Saturday	Tuesday - Saturday

**The Transfer Stations will be closed Veterans Day 11-11-17**

# Curbside Recycle List

Put any of the following items in your clear recycle bag:

**Metal:** Food and beverage containers. Also metal coat hangers.

- ✓ All containers must be rinsed of food/beverage residue.
- ✓ Removing labels is not required but is appreciated.

Don't try to recycling the following:

- ✗ No foil, foil bake pans, or aerosol spray cans.
- ✗ No metal appliance or toy parts.



**Plastic:** Food, beverage, and cleaning product containers.

- ✓ Removing labels is not required but is appreciated.
- ✓ All containers must be rinsed of product residue.
- ✓ Plastic grocery bags, news paper bags, dry cleaning bags, etc. must be bundled in a plastic shopping bag.



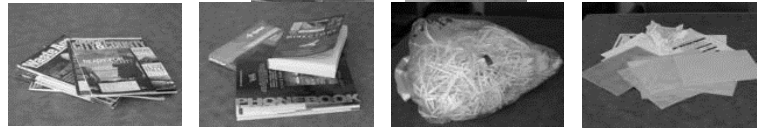
Don't try to recycle the following:

- ✗ No cooking oil, motor oil, or lamp oil plastic containers.
- ✗ No toxic, caustic, or flammable product bottles (e.g. drain cleaner, antifreeze, flea and tick shampoo, charcoal lighter fluid).
- ✗ No plastic containers with used sharps inside.
- ✗ No plastic Styrofoam packing material or plant pods.
- ✗ No plastic food trays or microwave dinner trays.
- ✗ No clean plastic food trays or boxes.
- ✗ No plastic bags from food products (e.g. chips, frozen foods, or sandwich bags).



**Paper:** Food and beverage containers, as well as newspaper, office paper, mail, catalogues, and magazines.

- ✓ Shredded paper is OK but must be bundled in a separate paper or plastic bag.
- ✓ Cardboard boxes must be flattened and bound with twine.
- ✓ Remove plastic liners.
- ✓ All containers must be free of food residue.
- ✓ Paper from frozen food packaging is acceptable only if the food did **NOT** contact the paper box (e.g. ice cream and frozen chicken paper containers are **NOT** okay, while a frozen pizza box is okay if the pizza was sealed in plastic).



The contents of your recycle bag should look a lot what you see in the illustrations on this page.

Join the county-wide curbside recycling program. **FREE** for Klickitat County households.

Call Republic Services (509)773-5825



# 2017 Curbside Recycling Schedule Inside

Klickitat County Solid Waste  
MS-CH-14  
228 West Main St  
Goldendale, WA 98620

Phone (509)773-4448

Klickitat County.org/374/SolidWaste

PRSRT STD  
US POSTAGE PAID  
PERMIT NO. 330  
THE DALLES OR  
97058

Postmaster: Please deliver to Postal Patron

## Household Hazardous Waste: Take it to the nearest Transfer Station

Look for the following key words on the container's label:

**Danger**      **Warning**      **Caution**

The container may also have a description of the hazards containing one of the following words:

**Flammable**      **Combustible**      **Poison**      **Caustic**      **Irritant**

**The label is important!** Attach loose labels to containers with rubber bands or other fasteners. Partially full containers from the product types listed below are generally considered to be household hazardous wastes. Empty containers can be disposed of with your normal trash service.

**Automotive:**

- Lead acid batteries
- Antifreeze
- Motor oil (only at some locations on designated days)
- Brake fluid
- Power steering fluid

**Household Maintenance:**

- Paint: latex and oil base
- Paint thinner
- Wood preservative
- Wood stain
- Rust remover
- Glues and binders
- Dry cell batteries

**Household Cleaning Products:**

- Bleach
- Metal polish
- Furniture polish
- Window cleaner
- Coffee pot cleaner
- Drain cleaner
- Grease remover
- Floor cleaner
- Oven cleaner
- Carpet cleaner
- Scouring powder
- Laundry detergent
- Spot and stain remover
- Toilet bowl cleaner

- Tub and tile cleaner
- Water softener
- Air freshener

**Miscellaneous:**

- Pool chemicals
- Photography chemicals
- Chemistry lab materials
- Mosquito repellent
- Weed or insect killer
- Fertilizer
- Compact fluorescent lamp bulbs
- Fluorescent lamp tubes
- Fluorescent lamp ballasts
- Rechargeable batteries

## Household Hazardous Waste Service is for Klickitat County Residents Only

**Household Hazardous Waste Collection Centers:** The above materials should be taken to one of the transfer stations in BZ Corners, Dallesport, Goldendale, or the Roosevelt drop-box site.

**Household Hazardous Waste Reuse Program:** Ask the transfer station attendants about re-useable paints, cleaning products, or yard and garden chemicals. These partially used products are available at no charge.

**Used Motor Oil:** Used oil accepted at the Goldendale Transfer Station on the 1<sup>st</sup> and 3<sup>rd</sup> Saturday of each month. Used oil also accepted at NAPA Auto Parts in Bingen and Brownings Fire Extinguisher Service on Hwy 142 just west of Goldendale.

**There is no charge for household hazardous waste services provided by Klickitat County Solid Waste in cooperation with Republic Services and the Washington State Department of Ecology.**

**Tires:** Return used tires to the vendor from which you purchase your new tires. Up to 5 light truck or passenger tires allowed per pickup load of garbage at the transfer stations.

**Commercial and Government Generators of Moderate Risk Waste:** For information on reduced rate disposal options call Klickitat County Solid Waste at (509)773-4448