

BEFORE THE BOARD OF COUNTY COMMISSIONERS
Klickitat County, Washington

IN THE MATTER OF)
TEMPORARY CLOSURE OF)
COURTNEY ROAD)
COUNTY ROAD NO. 11700)

Resolution No. 08922

WHEREAS, RCW 47.48.010 authorizes road closures when continued use will be dangerous to traffic; and

WHEREAS, Klickitat County has received a request from James Dean Construction, Inc. to extend the closure of Courtney Road at Mile Post 2.87 and Mile Post 4.36 for the Courtney Road Construction from October 15, 2022 through November 18, 2022; and

WHEREAS, Klickitat County Public Works will notify all local residents and emergency responders of the closure.


NOW, THEREFORE, BE IT RESOLVED, that Courtney Road at Mile Post 2.87 through Mile Post 4.36 will be closed from October 15, 2022 through November 18, 2022.

Dated this 11th day of October, 2022.

BOARD OF COUNTY COMMISSIONERS
Klickitat County, Washington

Chairman

ATTEST:



Clerk of the Board
Klickitat County, Washington

Commissioner



Commissioner



KLICKITAT COUNTY
PUBLIC WORKS DEPARTMENT



115 WEST COURT STREET, MS 303, GOLDENDALE WASHINGTON 98620 • FAX 509 773-5713 • VOICE 509 773-4616
GORDON J. KELSEY; PE: PUBLIC WORKS DIRECTOR

Project Update 2

Road Closure Courtney Road Project

Issued: October 4, 2022

For the safety of the public, during construction Courtney Road will be closed from Mile Post 2.87 to Mile Post 4.36 for construction work on the project. The road closure has been extended through Friday, November 18, 2022.

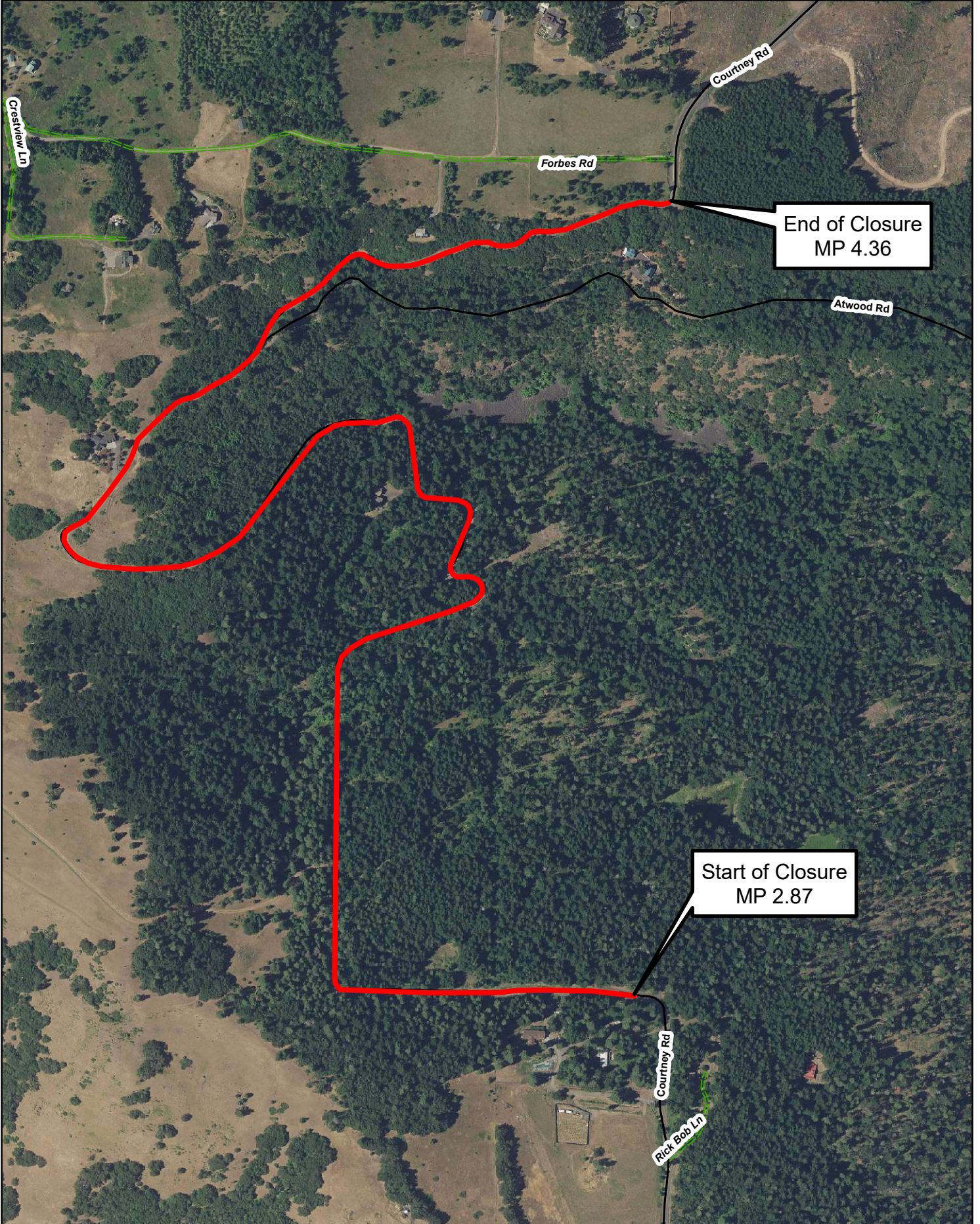
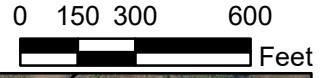
Residents within the closure limits will have access to their property, Emergency services access will be provided at all times.

The road will be closed to the public during the reconstruction of Courtney Road.

A map of the closure limits is included.

If you have questions about this project please call our office at 509-773-4616.

Courtney Road Closure



End of Closure
MP 4.36

Start of Closure
MP 2.87