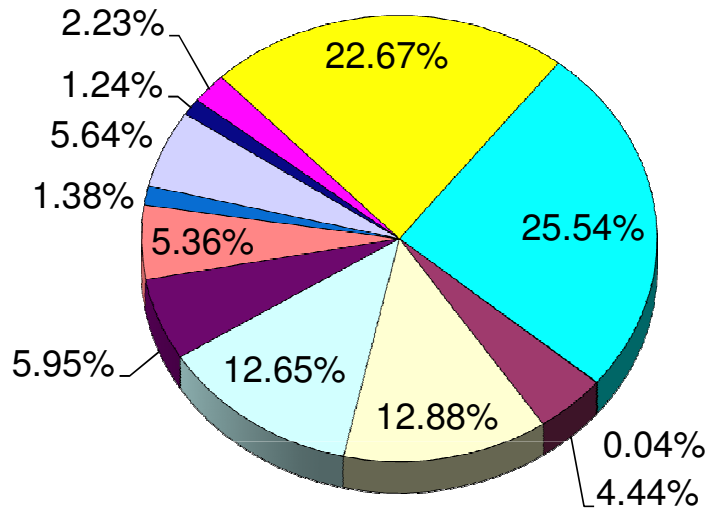


KLICKITAT COUNTY 2012 PROPERTY TAX DISTRIBUTION



■ Cemetery Districts	■ Cities	□ County Funds	□ County Road
■ Fire Districts	■ Hospitals	■ EMS District	□ Library District
■ Parks & Recreation	■ Port District	■ Local Schools	■ State School

KLICKITAT COUNTY 2012 PROPERTY TAX DISTRIBUTION

Cemetery Districts	0.04%	12,934.49
Cities	4.44%	1,433,619.52
County Funds	12.88%	4,161,213.70
County Road	12.65%	4,086,404.14
Fire Districts	5.95%	1,922,079.94
Hospitals	5.36%	1,731,397.90
EMS District	1.38%	445,177.55
Library District	5.64%	1,822,111.71
Parks & Recreation	1.24%	400,115.30
Port District	2.23%	721,298.59
Local Schools	22.67%	7,326,486.68
State School	25.54%	8,253,456.00

32,316,295.52